

INSTALLATION INSTRUCTIONS AND PARTS LIST

MODEL 590204

TOOL BOX MOUNTING BRACKETS FOR USE ON 590220 CAB GUARD

UNIVERSAL FOR FULL SIZE PICKUP TRUCKS

2002+ DODGE RAM

1999+ GM TRUCKS

1999+ SUPER DUTY

2004+ F-150 (WITH STAKE POCKETS)

2007+ TOYOTA TUNDRA

PLEASE READ INSTRUCTIONS BEFORE INSTALLING

REQUIRES (2) PEOPLE FOR MOUNTING

1. ASSEMBLE THE TOOL BOX BRACKETS TO CAB GUARD RING, BY USING (4) 7/16 X 3" CARRIAGE BOLTS (ITEM #11) (4) WASHERS (ITEM #7) & (4) NUTS (ITEM #6). LEAVE LOOSE FOR ADJUSTMENT TO VEHICLE. BRACKETS DO FIT SNUG. (FASTENERS INCLUDED IN CAB GUARD FASTENER PACKAGE).
2. SLIDE THE U-NUT (ITEM #8) ON THE STAKE POCKET BRACKET (ITEM #9) PLACE HEX HEAD SCREW (ITEM#4) & LOCK WASHER, WASHER (ITEM#10&14) THROUGH THE TOOL BOX MOUNTING BRACKETS OBOURD HOLE AND SCREW ON THE STAKE POCKET BRACKET AND U-NUT., LEAVE IT SO THAT THE BRACKET IS AT BOTTOM OF SCREW.
3. WITH A SECOND PERSON, LIFT THE ASSEMBLED CAB GUARD ONTO THE FRONT OF THE VEHICLES BOX, TIP FORWARD OR BACKWARD SO THAT THE STAKE POCKET MOUNT DROPS INTO THE STAKE POCKET HOLE.(*SOME ADJUSTING MAY NEED TO BE DONE TO MAKE BRACKET DROP IN CORRECTLY*).
4. ADJUST THE CAB GUARD FROM SIDE TO SIDE AND FROM FRONT TO BACK FOR PROPER PLACEMENT. TIGHTEN UP 7/16 X 3" BOLTS ONCE PLACEMENT HAS BEEN ESTABLISHED.
5. WITH THE GUARD CENTERED ON THE TRUCK, AND SITTING ON THE FRONT LIP OF THE BOX, MARK A LOCATION FOR THE SECOND FASTENER ON EACH SIDE AT THE OPPOSITE END OF THE MOUNTING SLOT. (**ON SOME TRUCKS, THIS LOCATION MAY BE BACK FROM THE STAKE POCKET MOUNT**). REMOVE THE CAB GUARD AND DRILL (2) 1/2" HOLES A THESE LOCATIONS. THEN DROP A TURN-NUT (ITEM# 5) INTO EACH 1/2" HOLE.
6. REINSTALL THE CAB GUARD,TIGHTEN UP THE STAKE POCKET HEX HEAD SCREWS MAKING SURE THAT THE STAKE POCKET BRACKET CATCHES THE FRONT AND REAR LIPS OF HOLES. (SEE DIAGRAM).
7. WHEN BRACKETS ARE IN PROPER PLACEMENT AND TIGHTENED DOWN, PUT A M8 BOLT AND WASHERS (ITEMS#10,13&14) THROUGH BRACKET INTO TURN-NUT (ITEM#5).THEN TIGHTEN DOWN. (SEE DIAGRAM)
8. MOUNT TOOL BOX AS NORMAL OVER TOP OF NEW BRACKETS. (*NOTE: LEAVE ROOM BETWEEN THE BACK OF TOOL BOX TO CAB GUARD FOR OPENING THE LID*).



(A LUVERNE Company)

1200 E. Birch St.

Brandon, SD 57005

560564 SHEET 1 OF 15OCT10

SERVICE PARTS LIST

ITEM	PART #	QTY	DESCRIPTION
1	560554	1	RING WELDMENT
2	560563	1	RIGHT HAND TOOL BOX BRACKET
3	560562	1	LEFT HAND TOOL BOX BRACKET
4	108582	2	SCR-HEX HD,5/16" X 2 1/2",ZP
5	108581	2	TURN NUT,M8
6	103737	4	NUT-HEX FLG,7/16-14,ZP
7	100081	4	WASHER-FLT,7/16,ZP
8	105541	2	NUT-U,MUTI THD,LNG,5/16-18,BLK
9	560494	2	PLATE-NUT,GAL,590200
10	100034	4	WASHER-FL,5/16,ZP
11	104945	4	BLT-CAR,7/16-14 X 3",ZP
12	108578	2	PLASTIC PLUG, 2" X 2"
13	106719	2	SCR-HEX HD,M8 X 1.25 X 30MM ZP
14	100030	4	WASHER-LOCK,5/16",ZP
15	108926	4	HOLE-PLUG,PLS,3/8",BLK,2-385-180-P



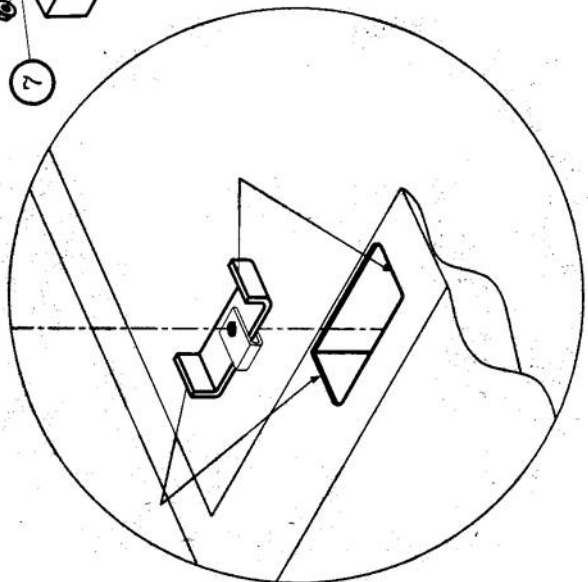
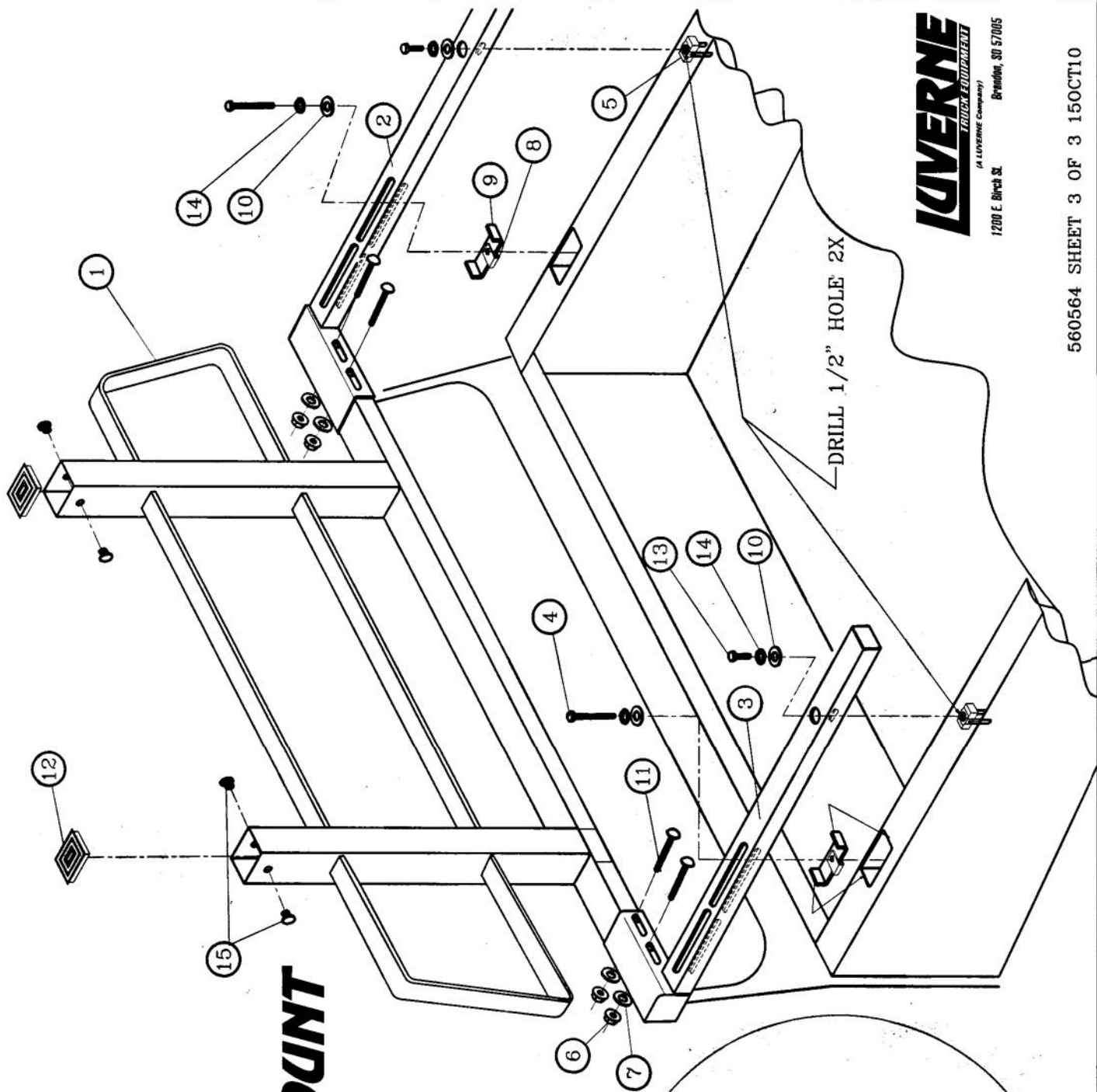
1200 E. Birch St.

Brandon, SD 57005

SERVICE PARTS LIST

MODEL NO. -- 590204

CAB GUARD TOOL BOX MOUNT



LOVERNE
TRUCK EQUIPMENT
A LOVERNE COMPANY
1200 E. Birch St.
Burlington, SD 57005