



INSTALLATION INSTRUCTIONS FOR MOUNTING

LUVERNE GUARD WITH THE FOLLOWING MODEL NO.:
205770 BRACKET KIT USED WITH 205504 & 205505 GUARD KIT

2004 - CURRENT FORD F-650 & F-750 SERIES TRUCKS

1. READ THE INSTRUCTIONS COMPLETELY AND CHECK TO MAKE SURE THAT ALL OF THE REQUIRED PARTS ARE ON HAND BEFORE STARTING THE INSTALLATION. THE CARTON SHOULD CONTAIN:

- (1) GUARD PACKAGE
 - (1) GUARD ASSEMBLY
- (1) MOUNTING BRACKET PACKAGE
 - (1) MOUNTING BRACKET, RH
 - (1) MOUNTING BRACKET, LH
 - (1) HARDWARE PACKAGE

REFER TO SHEETS #1, #2 & #3 FOR GUARD ASSEMBLY & INSTALLATION INSTRUCTIONS 2-8

2. LOOSEN AND REMOVE THE TWO BOLTS FROM ONE SIDE OF THE BUMPER.
3. INSTALL THE MOUNTING BRACKET (ITEM #2) OR (ITEM #3) FOR THAT SIDE, USING THE M12 X 1.75 X 40mm HEX HEAD SCREWS (ITEM #6), 7/16" FLAT WASHERS (ITEM #12), 1/2" LOCK WASHERS (ITEM #10), AS SHOWN IN FIG. 1. HAND TIGHTEN ONLY AT THIS TIME.
4. REPEAT STEPS 2 & 3 FOR THE OPPOSITE SIDE.
5. INSTALL THE GUARD (ITEM #1) ONTO THE MOUNTING BRACKETS BY SECURING THE TOP MOUNTING PLATES OF THE GUARD TO THE TOP OF THE MOUNTING BRACKETS WITH THE CLEVIS PINS (ITEM #14) AND THE HAIR PINS (ITEM #15)
6. FASTEN THE BOTTOM PLATES WITH 5/8-11" X 2" HEX BOLTS (ITEM #5), 9/16" FLAT WASHERS (ITEM #11), 1" OD HDPE WASHERS (ITEM #13) AND 5/8-11" NYLOCK NUTS (ITEM #8).
7. SNUG UP THE 5/8-11" NYLOCK NUTS SO THAT THE GUARD IS SNUG BUT WILL STILL ROTATE EASILY WHEN LOWERING THE GUARD TO OPEN THE HOOD. CHECK THAT THE GUARD IS CENTERED AND VERTICAL ON THE BUMPER AND THE MOUNTING BRACKETS ARE STRAIGHT UP AND DOWN. THEN TIGHTEN THE FOUR 1/2" BOLTS SECURING THE MOUNTING BRACKETS TO THE BUMPER. TIGHTEN TO 75 FOOT-POUNDS OF TORQUE.
8. INSTALL THE 1/2-13 X 1" HEX BOLTS (ITEM #7) AND THE 1/2-13 NYLOCK NUTS (ITEM #9) THAT ARE USED AS STOPS, WHEN LOWERING THE GUARD. ALIGN A FLAT SIDE OF THE BOLT HEAD WITH THE FLAT SURFACE OF THE MOUNTING TAB ON THE GUARD AND TIGHTEN THE NUT.



(A LUVERNE Company)

1200 E. Birch St.

Brandon, SD 57005

205776 SHEET 1 OF 3 30JUN09

SERVICE PARTS LIST

ITEM	PART NO.	QTY	DESCRIPTION
1	205504	1	GUARD - SST
1	205505	1	GUARD - BLACK
2	205771	1	MOUNTING BRACKET - RH, ZP
3	205772	1	MOUNTING BRACKET - LH, ZP
4	102500	4	INSERT - FINISH, 3"
5	100144	2	HEX HEAD SCREW - 5/8-12 X 2, ZP
6	103437	4	HEX HEAD SCREW - M12 X 1.75 X 40mm, ZP
7	100085	2	HEX HEAD SCREW - 1/2-13 X 1, ZP
8	107435	2	NUT - NYLOCK, 5/8-11
9	105654	2	NUT - NYLOCK, 1/2-13
10	100121	4	LOCK WASHER - 1/2", ZP
11	100140	4	FLAT WASHER - 9/16", ZP
12	100081	4	FLAT WASHER - 7/16", ZP
13	102149	2	HDPE WASHER - 1OD X 5/8ID X 1/16
14	107438	2	PIN - CLEVIS, 5/8 X 2, ZP
15	100159	2	HAIR PIN, 9GA., ZP
16	100252	1	LOGO/SERIAL NO. DECAL



(A LIVERNE Company)

1200 E. Birch St.

Brandon, SD 57005

205776 SHEET 2 OF 3 30JUN09

SERVICE PARTS DRAWING

MODEL NO. - 205770

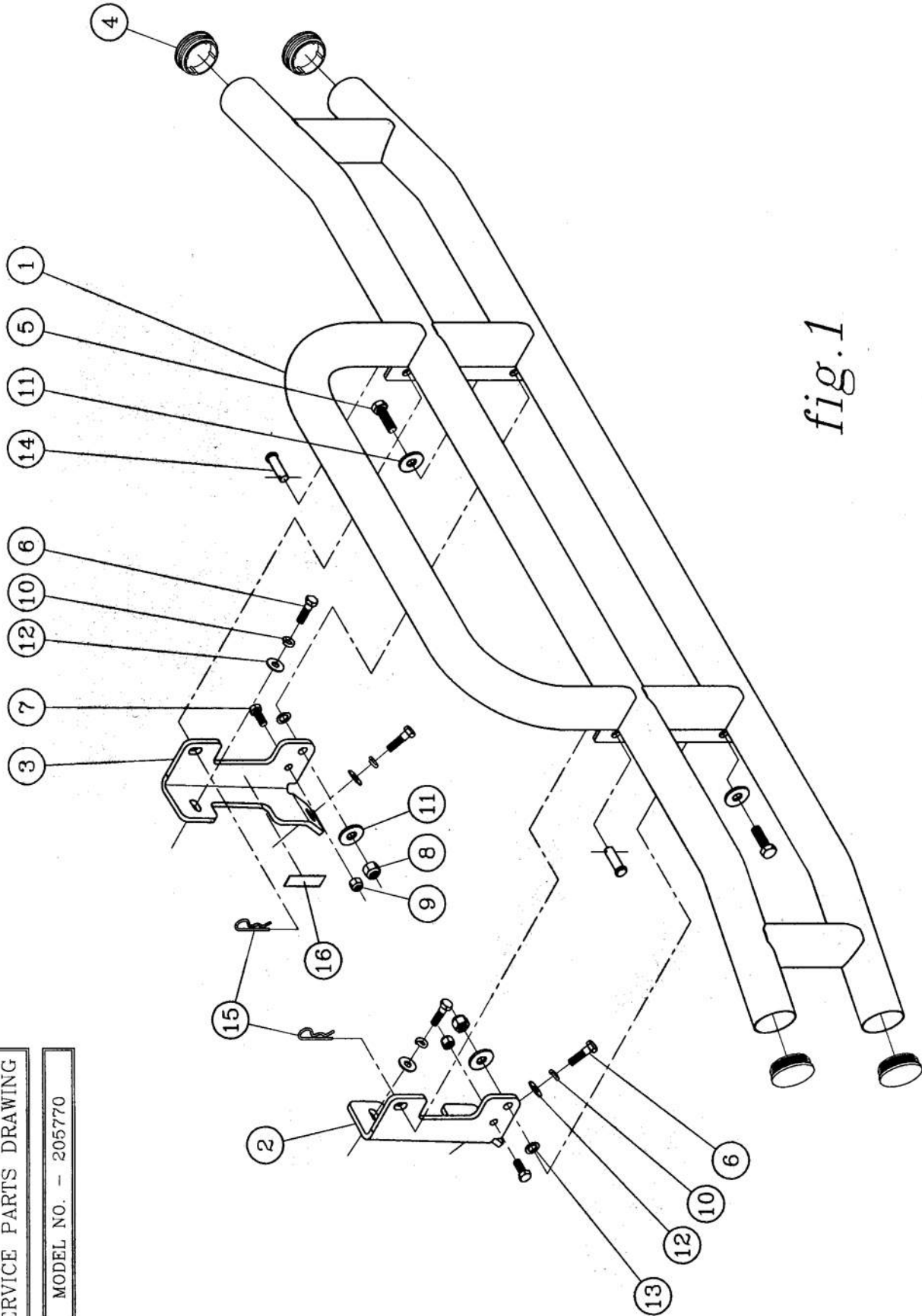


fig.1

LAMVERNE
ISO9001 CERTIFIED TRUCK
EQUIPMENT
1200 Birch Street
Brandon, SD 57005