



INSTALLATION INSTRUCTIONS FOR MOUNTING

LUVERNE GUARD WITH THE FOLLOWING MODEL NO.:
205580 BRACKET KIT USED WITH 205500 & 205501 GUARD KIT

1997 - CURRENT INTERNATIONAL 9200/9400 TRACTORS

1. READ THE INSTRUCTIONS COMPLETELY AND CHECK TO MAKE SURE THAT ALL OF THE REQUIRED PARTS ARE ON HAND BEFORE STARTING THE INSTALLATION. THE CARTON SHOULD CONTAIN:

- (1) GUARD PACKAGE
 - (1) GUARD ASSEMBLY
- (1) MOUNTING BRACKET PACKAGE
 - (1) MOUNTING BRACKET, RH
 - (1) MOUNTING BRACKET, LH
 - (1) HARDWARE PACKAGE

REFER TO SHEETS #1, #2 & #3 FOR GUARD ASSEMBLY & INSTALLATION INSTRUCTIONS 2-8

2. LOOSEN AND REMOVE THE FOUR BOLTS FROM ONE SIDE OF THE BUMPER.
3. INSTALL THE MOUNTING BRACKET (ITEM #2) OR (ITEM #3) FOR THAT SIDE, USING THE ½-13 X 2" HEX HEAD SCREW (ITEM #7) IN THE TWO INSIDE HOLES, THE ½-13 X 2-1/2" HEX HEAD SCREWS (ITEM #6), IN THE OUTSIDE HOLES, FOUR SPACERS (ITEM #14), ½" SAE FLAT WASHERS (ITEM #13), AND ½-13 SERRATED FLANGE NUTS (ITEM #11) AS SHOWN IN FIG. 1. HAND TIGHTEN ONLY AT THIS TIME.
4. REPEAT STEPS 2 & 3 FOR THE OPPOSITE SIDE.
5. INSTALL THE GUARD (ITEM #1) ONTO THE MOUNTING BRACKETS AND FASTEN WITH 5/8-11" X 2" HEX BOLTS (ITEM #5), 9/16" FLAT WASHERS (ITEM #12), 1"OD HDPE WASHERS (ITEM #15) AND 5/8-11" NYLOCK NUTS (ITEM #9).
6. SECURE THE TOP OF THE GUARD TO THE TOP OF THE MOUNTING BRACKETS WITH THE CLEVIS PINS (ITEM #16) AND THE HAIR PINS (ITEM #17)
7. SNUG UP THE 5/8-11" NYLOCK NUTS SO THAT THE GUARD IS SNUG BUT WILL STILL ROTATE EASILY WHEN LOWERING THE GUARD TO OPEN THE HOOD. CHECK THAT THE GUARD IS CENTERED AND VERTICAL ON THE BUMPER AND THE MOUNTING BRACKETS ARE STRAIGHT UP AND DOWN. THEN TIGHTEN THE EIGHT ½" BOLTS SECURING THE MOUNTING BRACKETS TO THE BUMPER. TIGHTEN TO 75 FOOT-POUNDS OF TORQUE.
8. INSTALL THE ½-13 X 1" HEX BOLTS (ITEM #8) AND THE ½-13 NYLOCK NUTS (ITEM #10) THAT ARE USED AS STOPS, WHEN LOWERING THE GUARD. ALIGN A FLAT SIDE OF THE BOLT HEAD WITH THE FLAT SURFACE OF THE MOUNTING TAB ON THE GUARD AND TIGHTEN THE NUT.

SERVICE PARTS LIST

ITEM	PART NO.	QTY	DESCRIPTION
1	205500	1	GUARD - SST
1	205501	1	GUARD - BLACK
2	205581	1	MOUNTING BRACKET - RH, ZP
3	205582	1	MOUNTING BRACKET - LH, ZP
4	102500	4	INSERT - FINISH, 3"
5	100144	2	HEX HEAD SCREW - 5/8-12 X 2, ZP
6	100093	4	HEX HEAD SCREW - 1/2-13 X 2-1/2, ZP
7	100091	4	HEX HEAD SCREW - 1/2-13 X 2, ZP
8	100085	2	HEX HEAD SCREW - 1/2-13 X 1, ZP
9	107435	2	NUT - NYLOCK, 5/8-11
10	105654	2	NUT - NYLOCK, 1/2-13
11	100123	4	NUT - SERRATED FLANGE, 1/2-13
12	100140	4	FLAT WASHER - 9/16", ZP
13	104995	12	FLAT WASHER - SAE, 1/2, SST
14	106653	8	SPACER- SST, 0.540 X 1.125 X 0.400
15	102149	4	HDPE WASHER - 1OD X 5/8ID X 1/32
16	107438	2	PIN - CLEVIS, 5/8 X 2, ZP
17	100159	2	HAIR PIN, 9GA., ZP
18	100252	1	LOGO/SERIAL NO. DECAL

SERVICE PARTS DRAWING

MODEL NO. - 205580

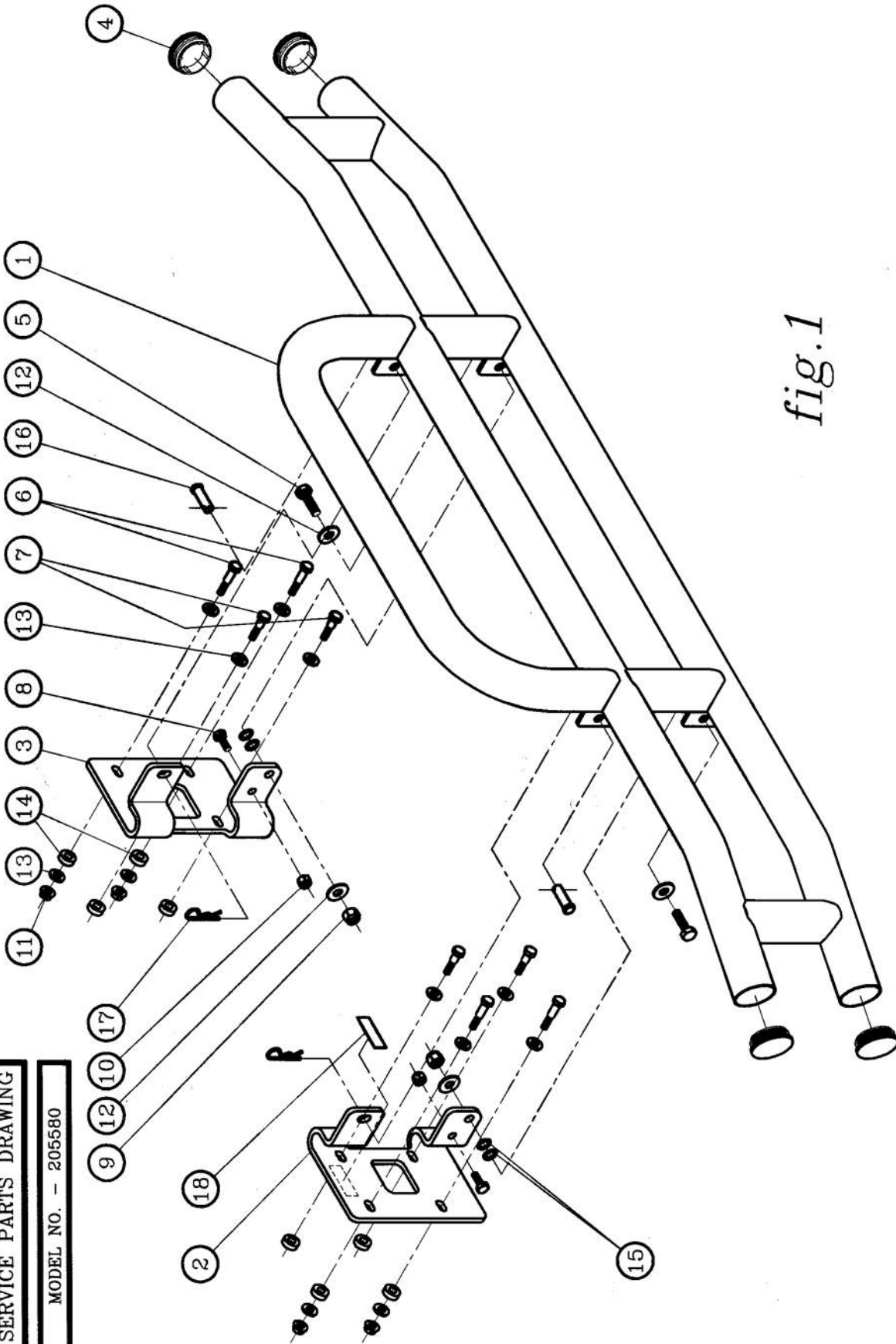


fig.1

LIVERNE
ISO9001 QSS000 CERTIFIED TRUCK
EQUIPMENT
INC.
1200 Birch Street
Brandon, SD 57005